

DRIFIRE® FR Apparel
from MSA Paraclete®



MSA
The Safety Company



*"I'm telling all my active duty friends,
hey, this is what you've gotta get."*

– EP, Sergeant, US Marine Corps


Flame Resistant. Moisture-Wicking. Antibacterial & Breathable. One Fabric.

Next Generation Comfortable FR Apparel

DRIFIRE FR Apparel patented fiber blend garments represent a new era of fabric design, combining optimal performance characteristics with leading FR protection. DRIFIRE FR Apparel's comprehensive multiple fabric weight layering system results in these innovative benefits:

- No melt or drip
- Moisture management - wicking and fast-drying
- Antibacterial - protection against odor and bacteria
- Comfort - soft to the touch, relaxed Technical Fit™ Design

DRIFIRE FR Apparel's ongoing innovation in flame-resistant fabric design provides optimal moisture management and comfort in flame-resistant work wear. DRIFIRE FR Apparel redefines flame-resistant apparel by delivering superior wicking, fast drying, and odor control performance without use of topical finishes or harmful chemical additives. These qualities are part of the fabric and will not wear out or break down over the life of the apparel. The lightweight Technical Fit Design tapers the torso and fits snugly while allowing for comfortable movement for long hours of wear. The DRIFIRE Apparel line of comfortable FR garments includes many styles and weights and offers users many distinct competitive advantages.



Garments and undergarments made with flame-retardant fabric can save lives in environments involving extreme heat. Temperature control can mean the difference between comfort and hydration maintenance, or heat stress. Users of moisture-wicking clothing stay dry, experiencing less skin irritation and fewer rashes, steam burns, and other heat-related injuries.

"You end up being more cool with the shirt on, keeping the temperature down helps you to train a little bit harder."

– JC, Sergeant, US Army

DRIFIRE FR Apparel flame-resistant fabrics dry faster than cotton, will not melt or drip, and will not deteriorate in performance with time and use. While not designed for ongoing direct flame contact, DRIFIRE FR Apparel flame-resistant fabrics and flame-resistant work wear can withstand flames, flash fires, and cold while controlling moisture.

Dedicated to ongoing innovation in flame-resistant fabric, DRIFIRE FR Apparel provides the optimal combination of moisture management, flame-resistance, and comfort in all flame-resistant garments and undergarments. DRIFIRE FR Apparel offers silk-weight, mid-weight, and heavyweight flame-resistant work wear as components of our flame-resistant garment layering system, offering these important advantages:

Superior Comfort through Moisture Management

DRIFIRE Comfortable FR Apparel Garments provide soft touch, temperature control *drirelease*® Fabric technology to keep wearers comfortable in extreme environments. DRIFIRE FR Apparel's benefits will never wash out and outperform cotton T-shirts and Polyarmor every time.

Flame Resistance

DRIFIRE Comfortable FR Apparel Garments do not melt or drip when exposed to flame, providing an additional protective layer* against flame, flash fires, and arc flash. Unlike other garments that may contribute to injuries to unexposed sections of your body, DRIFIRE FR Apparel self-extinguishing, flame-resistant wicking clothing is made with 85% modacrylic fiber. High-performance modacrylic fiber offers several superior properties when compared to cotton fiber, such as softness, warmth, resiliency, shape retention, and wrinkle resistance. These fibers are also resistant to moths, mildew, and sunlight.

Odor Management

Bacteria buildup can result in skin irritation and infection. Comfortable DRIFIRE FR Apparel garments feature built-in Microban® Protection and FreshGuard® Odor Control technologies working together to suppress odor-causing bacteria, helping to ensure that users and their partners operate within healthier, more comfortable environments.

Layering System

DRIFIRE FR Apparel's patented garment layering system lets your garments work together to increase arc rating and decrease dry time, providing wearers with maximum moisture management performance and flame-resistant protection.



***T-Shirt Crew
Silk, Mid, and Heavy Weights***

* Not intended as primary fire protective clothing.

*"I'd buy these for the whole platoon.
I want them safe, knowing that
they're not going to get burnt."*

– EP, Platoon Leader, US Marine Corps



*Long Sleeve Shirt Crew
Silk, Mid, and Heavy Weights*



*Long Pant
Silk, Mid, and Heavy Weights*



*Balaclava
Sports Bra
Women's Briefs
Men's Boxer Briefs*

"Wicks it right away & amazingly enough, it doesn't smell."

– CK, Corporal, US Army

Long Pant Silk-Weight

Size	Black	Sand	Olive Marine
2X Small	10112186	10112196	10112206
X-Small	10112194	10112204	10112214
Small	10112192	10112202	10112212
Medium	10112191	10112201	10112211
Large	10112190	10112200	10112210
X-Large	10112193	10112203	10112213
2 XL	10112185	10112195	10112205
3 XL	10112187	10112197	10112207
4 XL	10112188	10112198	10112208
5 XL	10112189	10112199	10112209

Long Pant Mid-Weight

Size	Black	Sand	Olive Marine
X-Small	10112589	10112608	10112617
Small	10112587	10112606	10112615
Medium	10112586	10112605	10112614
Large	10112585	10112604	10112613
X-Large	10112588	10112607	10112616
2 XL	10112581	10112590	10112609
3 XL	10112582	10112601	10112610
4 XL	10112583	10112602	10112611
5 XL	10112584	10112603	10112612

Long Pant Heavyweight

Size	Sand
Small	10112638
Medium	10112637
Large	10112636
X-Large	10112639
2 XL	10112635

Balaclava Lycra Jersey

Size	Description	Black
Unisize	Jersey, Single Layer Balaclava Lycra	10112226
Unisize	Jersey, Double Layer Balaclava Lycra	10112227

Sports Bra Lycra Jersey

Size	Sand
X-Small	10112232
Small	10112230
Medium	10112229
Large	10112228
X-Large	10112231

Women's Briefs Silk-Weight

Size	Sand
Small	10112224
Medium	10112223
Large	10112222
X-Large	10112225

Men's Boxer Briefs Silk-Weight

Size	Black
X-Small	10112221
Small	10112219
Medium	10112218
Large	10112217
X-Large	10112220
2 XL	10112215
3 XL	10112216

Women's Sizing Chart

Size	Bust	Hip
Small	32-34	34-36
Medium	34-36	36-39
Large	36-38	39-42
Extra Large	38-40	42-45

General Sizing Chart

Size	2XSM	XS	S	M	L	XL	2XL	3XL	4XL	5XL
Chest Measurement (+/- 1-2 inches)	25	29	33	37	41	45	49	53	57	61
Waist Measurement (+/- 1-2 inches)	23	26	29	32	35	38	41	44	47	50

T-Shirt Crew Silk-Weight

Size	Black	Sand	Olive Marine
2X Small	10112094	10112111	10112128
X-Small	10112108	10112125	10112142
Small	10112105	10112122	10112139
Medium	10112103	10112120	10112137
Medium Tall	10112104	10112121	10112138
Large	10112101	10112118	10112135
Large Tall	10112102	10112119	10112136
X-Large	10112106	10112123	10112140
X-Large Tall	10112107	10112124	10112141
2 XL	10112092	10112109	10112126
2 XL Tall	10112093	10112110	10112127
3 XL	10112095	10112112	10112129
3 XL Tall	10112096	10112113	10112130
4 XL	10112097	10112114	10112131
4 XL Tall	10112098	10112115	10112132
5 XL	10112099	10112116	10112133
5 XL Tall	10112100	10112117	10112134

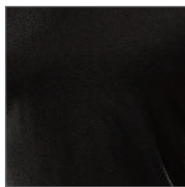
T-Shirt Crew Mid-Weight

Size	Black	Sand
X-Small	10112523	10112530
Small	10112521	10112528
Medium	10112090	10112527
Large	10112089	10112526
X-Large	10112522	10112529
2 XL	10112087	10112524
3 XL	10112088	10112525

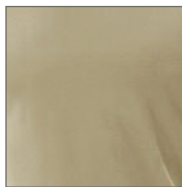
T-Shirt Crew Heavyweight

Size	Sand
X-Small	10112634
Small	10112632
Medium	10112631
Large	10112620
X-Large	10112633
2 XL	10112618
3 XL	10112619

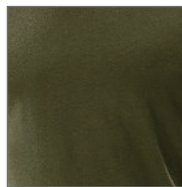
BLACK



DESERT SAND



OLIVE MARINE



Note: This bulletin contains only a general description of the products shown. While uses and performance capabilities are described, under no circumstances shall the products be used by untrained or unqualified individuals and not until the product instructions including any warnings or cautions provided have been thoroughly read and understood. Only they contain the complete and detailed information concerning proper use and care of these products.



ID 4130-02-MC / Sept 2010

© MSA 2010 Printed in U.S.A.

Corporate Headquarters
P.O. Box 426, Pittsburgh, PA
15230 USA
Phone 412-967-3000
www.MSAnet.com

**Commercial Government
Customer Service Center**
Phone 1-866-672-1001
Fax 1-800-967-0398

MSA Canada
Phone 1-800-672-2222
Fax 1-800-967-0398

MSA Mexico
Phone 01 800 672 7222
Fax 52-44 2227 3943

MSA International
Phone 412-967-3354
FAX 412-967-3451

Offices and representatives worldwide
For further information:

LS Shirt Crew Silk-Weight

Size	Black	Sand	Olive Marine
2X Small	10112145	10112159	10112173
X-Small	10112156	10112170	10112184
Small	10112153	10112167	10112181
Medium	10112151	10112165	10112180
Medium Tall	10112152	10112166	10112179
Large	10112149	10112163	10112177
Large Tall	10112150	10112164	10112178
X-Large	10112154	10112168	10112182
X-Large Tall	10112155	10112169	10112183
2 XL	10112143	10112157	10112171
2 XL Tall	10112144	10112158	10112172
3 XL	10112146	10112160	10112174
4 XL	10112147	10112161	10112175
5 XL	10112148	10112162	10112176

LS Shirt Crew Mid-Weight

Size	Black	Sand	Olive Marine
2X Small	10112532	10112552	10112572
X-Small	10112540	10112560	10112580
Small	10112538	10112558	10112578
Medium	10112537	10112557	10112577
Large	10112536	10112556	10112576
X-Large	10112539	10112559	10112579
2 XL	10112531	10112551	10112571
3 XL	10112533	10112553	10112573
4 XL	10112534	10112554	10112574
5 XL	10112535	10112555	10112575

DRIFIRE Apparel Garment Test Specifications

Characteristics	Meets/Exceeds Testing Standards
Moisture Wicking	AATCC-79
Flame Resistance	MIL-STD-191A, 5903/ASTM D 6413-99
Test Standards	
After Flame < 2 seconds	DRIFIRE Apparel has no after flame
Char-Length < 6 inches	DRIFIRE Apparel char-length is 3.5 inches
DRIFIRE Apparel fabric does not melt nor drip	

MSA
The Safety Company